
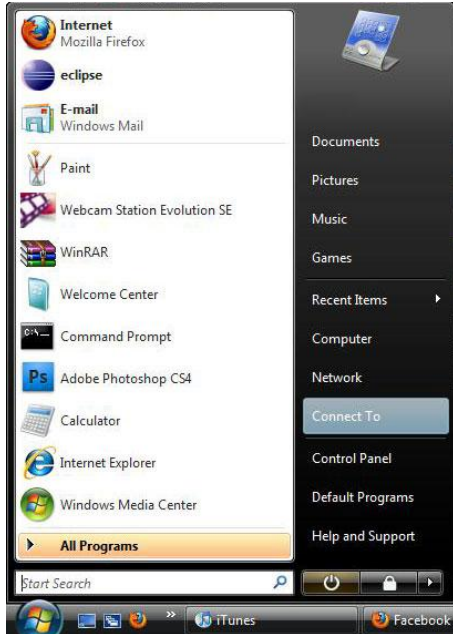


To connect to the Waukegan Public Library wireless network –

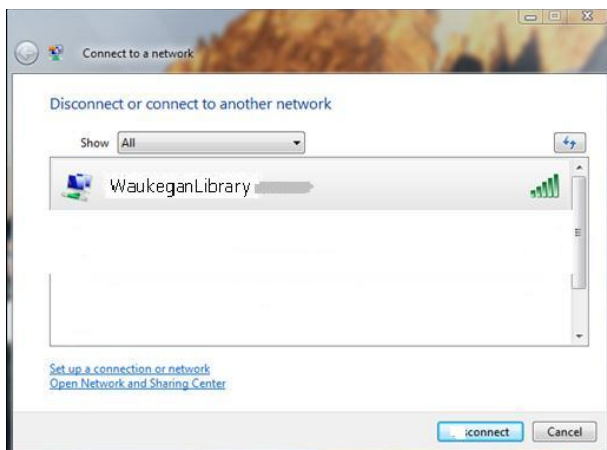
Vista

If you have a mobile PC, you can see a list of available wireless networks, and then connect to one of those networks, no matter where you are. The wireless networks appear only if your computer has a wireless network adapter installed and the adapter is turned on.

1. Open Connect to a Network by clicking the **Start** button , and then clicking **Connect to**.



2. In the **Show** list, click **Wireless**.



You'll see a list of the wireless networks currently available.

3. Click **WaukeganLibrary**, and then click **Connect**.

If you don't see the network you want to connect to, click **Set up a connection or network**. A list of options will appear that includes manually searching for and connecting to a network, as well as creating a new network connection.